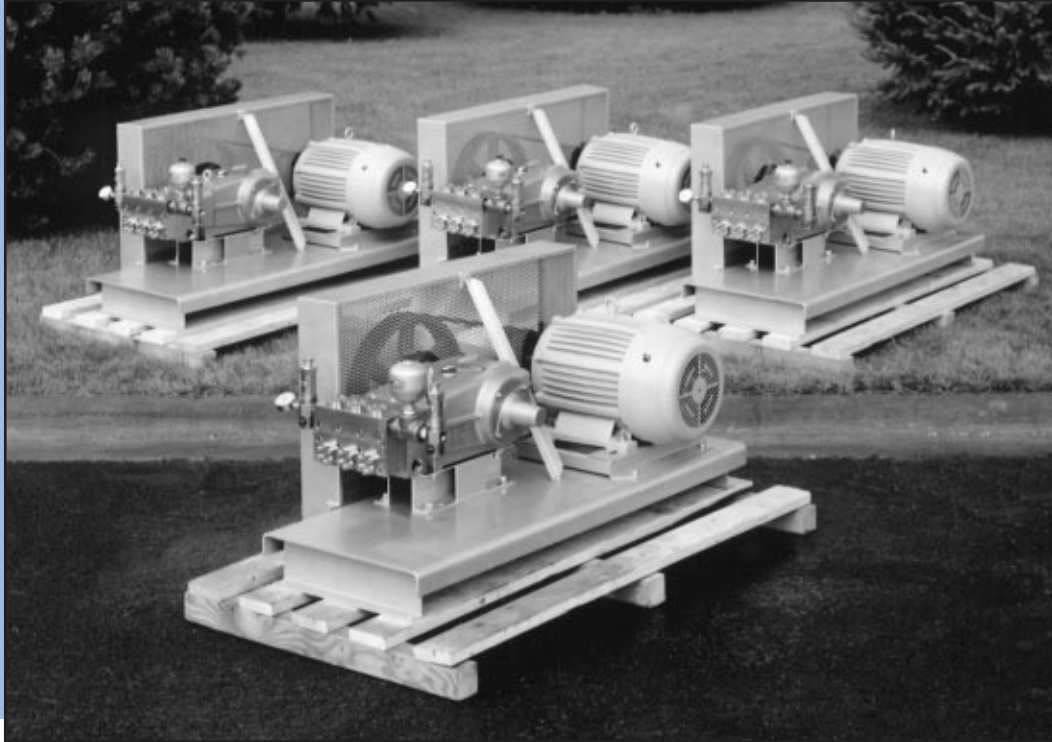


# Power Units



## ***Custom Built Power Units from 10-75 Hp***

***Minimize time and cost for designing, sourcing and fabricating.***

- Rugged, heavy-duty construction in a compact, streamline style for stationary installation or convenient portable unit with optional wheels and handle and stacked style for tight spaces.
- Base plate of 3/8", 2 mil epoxy powder coated steel or 304SS with rugged 1/4" channel steel base supports for maximum weight load and minimum flexing.
- Free standing or bolt down leveling and vibration shock mounts to accommodate individual or add-on installations.
- Two screw adjustable motor bases in epoxy coated or 304SS to simplify belt tension and adjustment.
- Reinforced, 13-gauge flattened, expanded metal, 1/2" mesh, belt guards and contour formed base plate sides for safety.
- 50Hz or 60Hz electric motors, hydraulic motors or gas engine drives available.
- Flow and pressure tested before shipment with exceptionally fast turn-around time of 2-4 weeks on most units.

***Single or Multiple Pump Units Available  
to Meet a Variety of Application Needs***

# Power Unit Quotation Checklist

## CAT PUMPS MODEL SELECTION

### 5-10 FRAME

- 5CP6120 Pump - BB
- 5CP6121 Pump - SS
- 70 Pump - BB
- 781 Pump - SSLB
- 650 Pump - BB
- 651 Pump - SS
- 681 Pump - SSLB
- 820 Pump - BB
- 821 Pump - S
- 1010 Pump - BB
- 1011 Pump - S

### 15-25 FRAME

- 1050 Pump - BB
- 1057 Pump - NAB
- 1051 Pump - SS
- 1520 Pump - BB
- 1521 Pump - S
- 1851 Pump - SSLB
- 2520 Pump - BB
- 2521 Pump - S
- 2530 Pump - BB
- 2537 Pump - NAB
- 2831 Pump - SSLB

### 35-38 FRAME

- 3507 Pump - NAB
- 3517 Pump - NAB
- 3520 Pump - BB
- 3521 Pump - SS
- 3527 Pump - NAB

Other \_\_\_\_\_

- 3535 Pump - BB
- 3537 Pump - NAB
- 3531 Pump - SS
- 3801 Pump - SSLB
- 3811 Pump - SSLB
- 3821 Pump - SSLB
- 3831 Pump - SSLB
- 3545 Pump - BB
- 3541 Pump - SS

### 60-68 FRAME

- 6020 Pump - BB
- 6021 Pump - S
- 6040 Pump - BB
- 6041 Pump - S
- 6761 Pump - SS
- 6767 Pump - NAB
- 6861 Pump - SSLB
- 6811 Pump - SSLB
- 6821 Pump - SSLB
- 6831 Pump - SSLB
- 6841 Pump - SSLB

BB=Brass NAB=Nickel Aluminum Bronze S=304SS SS=316SS SSLB=316SSL Block-Style Manifold

## APPLICATION

### SYSTEM SPECIFICATIONS

GPM \_\_\_\_\_ RPM \_\_\_\_\_  
 PSI: Min. \_\_\_\_\_ Max. \_\_\_\_\_ Working \_\_\_\_\_  
 Duty: Interm \_\_\_\_\_ Cont \_\_\_\_\_ Hrs/Day \_\_\_\_\_  
 Head Materials \_\_\_\_\_  
 Elastomers \_\_\_\_\_

### PUMPING CONDITIONS

Fluid: Freshwater \_\_\_\_\_ Sea Water \_\_\_\_\_ Hard Water \_\_\_\_\_  
 Chemicals: \_\_\_\_\_  
 Fluid Temp: Amb. \_\_\_\_\_ <140°F \_\_\_\_\_ <180°F \_\_\_\_\_  
 Inlet PSI \_\_\_\_\_ Gravity \_\_\_\_\_ City \_\_\_\_\_  
 Tank Size \_\_\_\_\_ Booster \_\_\_\_\_ Suction \_\_\_\_\_  
 Environment Temp. \_\_\_\_\_ Noise Level \_\_\_\_\_  
 Elevation \_\_\_\_\_

### DRIVE MECHANISM

V-Belt \_\_\_\_\_ Coupling \_\_\_\_\_  
 Gearbox \_\_\_\_\_  
 Vari-Drive \_\_\_\_\_  
 Hydraulic Drive \_\_\_\_\_

### ELECTRIC MOTOR DRIVE (All Motors TEFC)

Voltage \_\_\_\_\_ Phase \_\_\_\_\_  
 RPM \_\_\_\_\_ Amps \_\_\_\_\_  
 Horse Power \_\_\_\_\_ Cycle \_\_\_\_\_ 50 \_\_\_\_\_ 60 \_\_\_\_\_  
 Isol. Class \_\_\_\_\_ TEFC \_\_\_\_\_ Open Drip \_\_\_\_\_  
 Hazardous \_\_\_\_\_ San. Wash Down \_\_\_\_\_ Explosion \_\_\_\_\_  
 Hostile Duty \_\_\_\_\_ Prem. Eff. \_\_\_\_\_

### ACCESSORIES

#### Inlet Section:

C.A.T. (w/Adapters) \_\_\_\_\_  
 Dual Filters \_\_\_\_\_  
 Inlet Pressure Regulator \_\_\_\_\_  
 Oilers \_\_\_\_\_

#### Discharge Section:

Regulator/Unloader \_\_\_\_\_  
 Pulsation Dampener \_\_\_\_\_  
 Safety Valve/Pop-Off Valve \_\_\_\_\_  
 Thermo Valve \_\_\_\_\_  
 Pressure Gauge \_\_\_\_\_  
 High Pressure Hose \_\_\_\_\_  
 Nozzles \_\_\_\_\_ Guns \_\_\_\_\_ Lances \_\_\_\_\_  
 Other \_\_\_\_\_

### FRAME/SKID

Base Plate w/Belt Guard, Shock Mounts \_\_\_\_\_  
 Epoxy Coated \_\_\_\_\_ S.S. \_\_\_\_\_  
 Wheels \_\_\_\_\_ Swivel \_\_\_\_\_ Locking \_\_\_\_\_  
 Handle \_\_\_\_\_

### OTHER TOTAL SYSTEM DATA

Portable \_\_\_\_\_ Stationary \_\_\_\_\_ Shipboard \_\_\_\_\_  
 Enclosed (Ventilated) \_\_\_\_\_  
 Sketch Provided \_\_\_\_\_ Drawing Req. \_\_\_\_\_  
 Planned Maintenance Cycle \_\_\_\_\_

#### Date Quote Needed

#### Qty Unit(s) Needed

#### Additional Comments

\_\_\_\_\_  
 \_\_\_\_\_  
 \_\_\_\_\_  
 \_\_\_\_\_  
 \_\_\_\_\_

#### Requesting Company

Name \_\_\_\_\_  
 Company \_\_\_\_\_  
 Address \_\_\_\_\_  
 Phone \_\_\_\_\_  
 FAX \_\_\_\_\_

Copy this page and Fax to EDI DISTRIBUTORS at 856-428-2549